



**PARKWAY WEST  
MIDDLE SCHOOL  
AFTER SCHOOL  
ACTIVITIES  
2011 - 2012**

## STUDENT ACTIVITIES

West Middle believes extracurricular activities are an important part of the middle school years. Participation in intramural sports and clubs can help enhance academics as well as social skills in our students. After school activities teach students school spirit, sportsmanship and encourages time management.

We offer a variety of clubs and activities and welcome other suggestions. Activities will start promptly at 3:15 PM and end at 4:21 PM. Activity buses will be provided to take students home. All buses will depart from West Middle between 4:25 – 4:45 PM. A list of the bus runs is provided in the back of this booklet. We are looking forward to having all students involved in making this a fun experience that enhances sportsmanship as well as friendship at West Middle.

If you have any questions about intramural sports, please contact Kevin Bueltemann at 314-415-7452 x27441



## SPORTS/RECREATIONAL ACTIVITIES

Intramural sports are offered after school on Monday, Wednesday and Thursday. All students interested are welcome to participate. Students **must sign-up in the cafeteria or with a sponsor** before they can participate each day. Students will need to check the Daily Announcements for their grade level activity. We offer inter-district competition with other middle schools for specific sports. These sports include Basketball, Cross Country, Fleetball, Soccer, Track & Field, Volleyball and Wrestling. All competitions are coed. All interested need to be dressed out, ready to go in the gym by **3:15 PM**. All intramural sports will end at **4:15 PM**.

# WEST MIDDLE SCHOOL

## PROCEDURES FOR AFTER SCHOOL ACTIVITIES

West Middle School provides a variety of after school activities including intramural sports, clubs, organizations, volunteer opportunities, mixers, Fine Arts performances, academic competitions and help sessions. All students are encouraged to participate in as many activities as time and interest allow. These opportunities provide a time to enjoy being with old friends, making new friends, working with teachers, and gaining valuable experiences.

As you remain after school for activities, and to insure the safety and well-being of all students, please keep the following in mind:

1. You must report to the activity by 3:15 PM. All students must be with a faculty member during the activity period. We are responsible for you; you cannot be in any area of the school or grounds without a faculty member present.
2. Participate effectively in the activity. Display cooperation, respect and responsibility. Everyone is counting on you to be a positive member of the activity.
3. Stay in the activity until the teacher dismisses you at 4:15 PM. Go to your locker and then to the front of the school to meet your bus or ride, or walk home, as appropriate.
4. While waiting for your bus, demonstrate the same positive behavior expected of you at other times.

You must be an active participant in the after school activity. Our program does not allow for spectators. Get involved! Enjoy the benefits from all the opportunities your teachers provide you!

**IMPORTANT!** In the event that a student remains after school and does not report to an activity by **3:15 PM**, the student must report to the office and discuss the situation with an administrator. If the situation is beyond the student's control, the student will be assigned a place to study during the period. If the situation is not beyond the student's control, the student will be given a warning to insure that this does not occur again.

If the student stays after school without an activity, he/she will be referred to the grade level administrator. Appropriate disciplinary action may result.

**THANKS FOR MAKING WEST BEST!**

# **Intramural Sports Schedule (subject to change)**

**September - October                      Cross Country, Fleetball, Tennis, Wrestling**

**November - December                      Basketball**

**January - February                      Basketball, Volleyball**

**March - April                      Soccer, Tennis, Track & Field**

**April - May                      Softball, Tennis, Track and Field**

**Team Sports - Basketball, Fleetball, Soccer and Volleyball**

**Mondays - 6th Grade**

**Wednesdays - 7th Grade**

**Thursdays - 8th Grade**

**All other sports will meet according to the sponsor and may vary each trimester.**

## RECREATIONAL ACTIVITIES DESCRIPTION

### 6<sup>TH</sup> GRADE HOMEWORK CENTER



Who: 6th grade students – maximum 16 students  
When: Monday, Wednesday and Thursday  
Where: Room #3322  
Activity: Homework center is a place for 6<sup>th</sup> graders to do homework and get help with their studies if they need it. Students must sign-up as limited space is available. This is a quiet working environment and students are expected to have enough work for the entire hour.

Sponsor: Debbie Hyatt & Shelly Moelm

### 7<sup>TH</sup> GRADE HOMEWORK CENTER



Who: 7<sup>th</sup> grade students – Maximum 10-12 students  
When: Monday, Wednesday and Thursday  
Where: Room #3402  
Activity: Homework center is a place for 7<sup>th</sup> graders to do homework and get help with their studies if they need it.

Sponsor: Rose Sapp & Kelly Lautenschlager

### ACTION TEAM!



Who: All West Middle Students - Maximum 20 students  
When: Weekly on Monday and Wednesday, all year  
Where: Room #3221  
Activity: Action Team will meet twice a week to work toward improving academic and social skills. During each activity period, students will build community and learn how to effectively collaborate and study in a group setting.

## ART CLUB



Sponsor: Tia Leach

Who: 6<sup>th</sup>, 7<sup>th</sup> and 8<sup>th</sup> grade students that are **not** enrolled in Art

When: TBD

Where: Room #2400 (Art Room)

Activity: Activities will be centered around students' interest with some sponsor-directed projects. The purpose of the club will be to provide learning and growing opportunities for students with a special interest in Art. The projects offer exposure to drawing, painting, computers and clay.

Sponsor: Merlin Taylor

## BASKETBALL



Who: Open to all West Middle students

When: Beginning in December - See the schedule in the Daily Announcements and in the front of this activity booklet.

Where: Gym

Activity: Students will be provided opportunities to develop skills, strategy, and teamwork through game play. Students will compete against other Parkway Middle Schools in a basketball tournament.

Sponsors: TBD

## BOARD GAMES & PUZZLES



Who: Open to all West Middle Students – Maximum number of students is 12

When: Meet weekly on Monday – All year

Where: Room #3323

Activity: Have fun, meet new friends, and strengthen your process and decision making skills and problem solving skills

Sponsor: Carole Granger

## CHAMBER ENSEMBLE - 8TH GRADE



Who: Auditions will be held in 8<sup>th</sup> grade choir classes  
When: Rehearsals will be “as needed”  
Where: Room #2604  
Activity: The group will perform for special functions throughout the year.

Sponsor: Pam Silverio

## CHESS CLUB



Who: Open to all West Middle students  
When: **Thursday** – all year  
Where: Room #3102  
Activity: The Chess Club is open for all levels of play. Come and learn how to play the game or to challenge others.

Sponsor: Elsie Rafferty

## CROSS COUNTRY



Who: Open to all West Middle students  
When: Meet weekly on Monday, Wednesday and Thursday  
Where: Gym  
Activity: Students will be instructed as to the proper techniques for stretching muscles, warm up, cool down, as well as train for a cross country run. Students will then run in a Parkway District Cross Country event at one of the Parkway Schools.

Sponsors: Jack Jackson, Kim Rameriz, Cecelia Ryon, Justa Dahl and Molly Benson

## DEBATE CLUB



Who: Experienced and inexperienced debaters welcome! - Maximum of 20 students  
When: Mondays – Beginning October 3<sup>rd</sup>  
Where: Room #3102  
Activity: We will explore different forms of debate such as Lincoln Douglas and Public Policy. We will also perform, according to students' various interests and talents, other forensics events including humorous and dramatic interpretation, impromptu speaking, extemporaneous speaking, or original oratory.

Sponsors: Pam Hausfather

## FLEETBALL



Who: Open to all West Middle students  
When: Monday – 6<sup>th</sup> grade; Wednesday – 7<sup>th</sup> grade; Thursday – 8<sup>th</sup> grade  
September - October  
Where: Gym  
Activity: Students will be provided opportunities to discover Fleetball through game play. Students will compete against other Parkway Middle schools in a Fleetball tournament.

Sponsors: Mike Unland (6<sup>th</sup>), Krystalynn McClinton(7<sup>th</sup>), Will Swihart & Rob DeLia (8<sup>th</sup>)

## 8<sup>TH</sup> GRADE HISTORY CLUB



Who: Open to all 8<sup>th</sup> grade West Middle students  
When: Thursdays – twice per month  
Where: Room #3515  
Activity: We will explore your interests. Come and plan future activities. Explore your ideas for a history craft session, a book talk, a film, a speaker, support for working on National History Day projects – what are your ideas.

Sponsors: Sue Wilson & Chris Lorenz

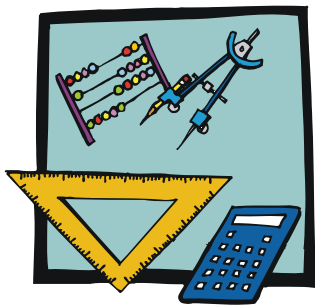
## LIBRARY MEDIA CENTER – OPEN LIBRARY



Who: Open to all students  
When: Monday – Limit 20 students – **1<sup>st</sup> semester only**  
Where: Library Media Center  
Activity: Open library is a time for students to have access to the library media center. Students will be able to use media center resources, get homework help, and study in a quiet environment.

Sponsors: Kristin Ruzicka

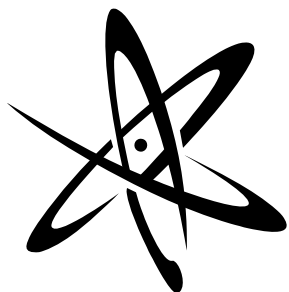
## 7<sup>TH</sup> & 8<sup>TH</sup> GRADE MATH CLUB



Who: Open to all 7<sup>th</sup> and 8<sup>th</sup> grade West Middle students  
When: Wednesday – all year  
Where: Room #3624  
Activity: To allow time for students to pursue an in-depth study of topics which are lightly covered in the standard curriculum. Students will also be preparing for various math competitions to be held in the Spring of 2011. Math concepts will be presented to students via discussion and problem-solving activities. Students will be given a set of exercises to complete outside of the club time and will be checked for comprehension.

Sponsor: Amy Goldman

## SCIENCE IN MOTION - FOR GIRLS



- Who: Open to 6<sup>th</sup>, 7<sup>th</sup> and 8<sup>th</sup> grade girls  
When: Meet weekly on Wednesday; all three trimesters  
Where: Room #3323  
Activity: A science club for girls. Together we make and share projects, do hands-on activities, listen to guest speakers, and go on field trips.
- Sponsor: Carole Granger

## SCIENCE OLYMPIAD



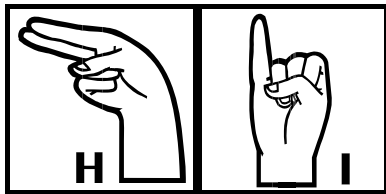
- Who: Open to 6<sup>th</sup>, 7<sup>th</sup> and 8<sup>th</sup> graders who are self-motivated, hard-working students  
When: Meet weekly on Wednesday; beginning in mid-October  
Where: Room #3404  
Activity: Science Olympiad is a fun and rewarding science club with an emphasis on competition. Students will prepare for competition in research events, application events and building events. Our meetings are focused on preparing for competition however, this club is rewarding for all who join. Only the top 15 students will compete.
- Sponsor: Melissa Di Fiori

## SEWING/F.A.C. CLUB - FEES REQUIRED



- Who: Open to all West Middle students **who have prior sewing machine experience**  
When: Will meet on Monday; starting in October  
Where: Room #2404  
Activity: Sewing Club is for students with prior sewing experience. Individual projects and/or service projects may be selected by the student. Fees to cover the cost of individual projects will need to be paid by the student.
- Sponsor: Vickie Jones

## SIGN LANGUAGE CLUB - AMERICAN



Who: Open to all West Middle students  
When: Will meet on Thursday, September 15  
Where: Room #3109  
Activity: A club to give you a sneak peak into the visual language of American Sign Language. Reasons you should join are; talk while underwater, when your mouth is full with food, private conversations with your hands, and much more. We will learn to tell stories, watch movies in sign language, play games using ASL, and most importantly, talk with our Deaf peers in and outside of school.

Sponsor: Aaron Delbruegge

## SOCCER



Who: Open to all West Middle students  
When: Beginning of third trimester - Date to be announced later  
Where: Upper field  
Activity: Students will be provided opportunities to develop skills, strategy, and teamwork through game play. Students may compete against other Parkway Middle Schools in a soccer tournament. The date will be determined later.

Sponsors: Dione Heilich, Molly Benson, Rob Delia

## SPANISH CLUB



Who: Open to all 6<sup>th</sup> graders – maximum 28 students  
When: September 21, December 7 & March 7  
Where: Foreign Language well area  
Activity: Experience some Spanish culture with these hands-on activities: September 21, Day of the Dead masks; December 7, Mexican holiday piñata; March 8, cascarones

Sponsors: Norma Myers and Megan Schacht

## SOCIAL JUSTICE LEADERSHIP CLUB



Who: Open to all West Middle students – Maximum 24 students  
When: 2<sup>nd</sup> and 3<sup>rd</sup> Trimester on Wednesday  
Where: TBA  
Activity: Participants in this club will explore aspects of their own culture and identity and learn about the culture of others. The students will develop school-wide activities to raise awareness and promote respect in our school community.

Sponsors: Lisa Burks and Staff

## SOLO-ENSEMBLE GROUPS

### Festival Preparation



Who: Students will rehearse in preparation for adjudication of their ensemble(s).  
When: 2<sup>nd</sup> Trimester – Monday and Wednesday  
Where: Room #2604  
Activity: Will attend a Spring festival - date to be announced later. This is an out-of-school field trip. Students will need to be transported by their parents to attend the festival.

Sponsor: Pam Silverio

## STUDENT COUNCIL - (STUCO)



Who: Open to all West Middle students  
When: TBD  
Where: Room #3312  
Activity: Student Council represents the student body through elected homeroom representatives. The primary focus is to increase leadership skills and school spirit by attending meetings, planning social events, and participating in community service projects.

Sponsors: Lisa Hensley

## TENNIS CLUB - BEGINNERS



- Who: Open to all West Middle students – Maximum 20 students
- When: Meet weekly - Beginning Tennis will meet on Monday with Ms. Granger in the Fall (1<sup>st</sup> trimester) and Spring (3<sup>rd</sup> trimester)
- Where: Tennis courts at West Middle
- Activity: Instruction and tennis team will be developed. Students will learn fundamentals, drills and match play. Rackets will be provided or bring your own.
- Sponsors: Carole Sanford

## TRACK & FIELD



- Who: Open to all West Middle students
- When: Meet weekly on Monday, Wednesday and Thursday; 3<sup>rd</sup> trimester
- Where: Gym
- Activity: Students will be instructed as to the proper techniques for stretching muscles, warm up, cool down as well as train for Track and Field events. Students will then run in a Parkway District Track and Field event at one of the Parkway Schools - date will be determined later.
- Sponsors: Jack Jackson, Kim Rameriz, Cecilia Ryon, Matt Zurek, Ryan Crowley & Justa Dahl

## VOLLEYBALL



- Who: Open to all West Middle students
- When: January - February  
See schedule in the front of this booklet.
- Where: Gym
- Activity: Students will be provided opportunities to develop skills, strategy, and teamwork through game play. Students will compete against other Parkway Middle schools in a volleyball tournament.
- Sponsor: TBD

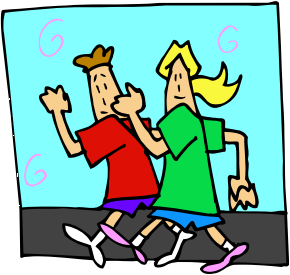
## VORACIOUS VOCABULARY!



Who: Open to all West Middle students – Maximum 24 students  
When: Monday – all year  
Where: TBA  
Activity: Students will meet to play a variety of games designed to expand and enhance vocabulary. Students from all grades are invited to join us! Bring your friends; make some new ones! There will be a focus on FUN as well as learning new words!

Sponsor: Lisa Burks and Staff

## WALKING WELLNESS CLUB



Who: Open to all West Middle students – Maximum 20 students  
When: Wednesday – 1<sup>st</sup> Trimester  
Where: Meet in Front Lobby  
Activity: Walking for fitness with social interaction – will need walking shoes

Sponsor: Vicki Marx & Mary Rueschhoff

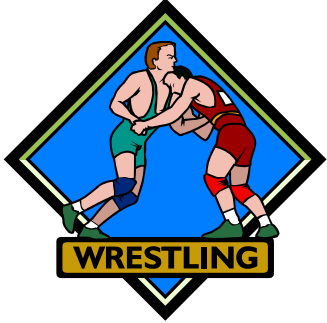
## WINTER ROAD WARRIORS



Who: Open to all West Middle students  
When: Monday and Wednesday – Beginning Wednesday, January 12<sup>th</sup> until Spring Break  
Where: Outdoors  
Activity: If you are interested in casual jogging, endurance running or just want to do some off season training, this is the activity for you!

Sponsor: Jack Jackson & Ryan Crowley

## WRESTLING CLUB



- Who: Open to all West Middle students – Experienced and inexperienced welcome  
Maximum of 20 students
- When: Monday, Wednesday & Thursday – 1<sup>st</sup> trimester
- Where: Fitness/Activity Room #1600
- Activity: Students will be introduced to folk style (high school) wrestling. They will participate in the Parkway Middle Schools Wrestling Tournament.
- Sponsor: Merlin Taylor

## 2011 – 2012 Intramural Schedule

Oct. 19<sup>th</sup> 2011 – Wrestling tournament at Central Middle  
3:30 PM – 6:00 PM

Oct. 24<sup>th</sup> 2011 – Fleetball tournament at West Middle  
3:30 PM – 5:30 PM (Oct. 27<sup>th</sup> – rain date)

Nov. 2<sup>nd</sup> 2011 – Cross Country Meet at South Middle  
4:00 PM – 5:30 PM (Nov. 7<sup>th</sup> – rain date)

Jan. 11<sup>th</sup> 2012 – 8<sup>th</sup> grade boys and girls basketball at South Middle  
3:30 PM – 6:00 PM (girls play first)

Jan. 18<sup>th</sup> 2012 – 8<sup>th</sup> grade boys and girls basketball at Central Middle  
3:30 PM – 6:00 PM (girls play first)

Jan. 18<sup>th</sup> 2012 – 6<sup>th</sup> grade boys basketball at Southwest Middle  
3:30 PM – 6:30 PM

Jan. 18<sup>th</sup> 2012 – 6<sup>th</sup> grade girls basketball at South Middle  
3:30 PM – 6:30 PM

Jan. 19<sup>th</sup> 2012 – 7<sup>th</sup> grade boys basketball at Northeast Middle  
3:30 PM – 6:30 PM

Jan. 19<sup>th</sup> 2012 – 7<sup>th</sup> grade girls basketball at Southwest Middle  
3:30 PM – 6:30 PM

Jan. 20<sup>th</sup> 2012 – 8<sup>th</sup> grade boys and girls basketball at West Middle  
3:30 PM – 6:00 PM (boys play first)

Jan. 23<sup>rd</sup> 2012 – 8<sup>th</sup> grade boys and girls basketball at West Middle  
3:30 PM – 6:00 PM (girls play first)

Mar. 14<sup>th</sup> 2012 – 6<sup>th</sup> grade boys and girls volleyball at Northeast Middle  
3:30 PM – 6:30 PM

Mar. 28<sup>th</sup> 2012 – 7<sup>th</sup> grade boys and girls volleyball at Northeast Middle  
3:30 PM – 6:30 PM

Mar. 29<sup>th</sup> 2012 – 8<sup>th</sup> grade boys and girls volleyball at Northeast Middle  
3:30 PM – 6:30 PM

Apr. 23<sup>rd</sup> 2012 – 8<sup>th</sup> grade boys and girls soccer at West Middle  
3:30 PM – 6:00 PM

Apr. 25<sup>th</sup> 2012 – 7<sup>th</sup> grade boys and girls soccer at South Middle  
3:30 PM – 6:00 PM

Apr. 26<sup>th</sup> 2012 – 6<sup>th</sup> grade boys and girls soccer at South Middle  
3:30 PM – 6:00 PM

May 10<sup>th</sup> 2012 – Track & Field Meet at South High  
9:00 AM – 1:00 PM

**Parkway School District  
 Bus Driver Directions For 328-P M, W, TH (GREEN) WESTMID ACT  
 REVISED 08/15/2011**

Route: 328-P M, W, TH (GREEN)  
 Bus: 32  
 Driver: VIERLING, ROBERT  
 Anchor: WEST MIDDLE SCHOOL

Start Time: 04:30 pm  
 End Time: 06:02 pm  
 Total Time: 92:05  
 Distance: 37.91 mi.

Total Riders:  
 Max Load: 0  
 Route Days: MWH  
 Schedule Day: Wednesday

Driver Sign-On Time: N/A

Driver Sign-Off Time: 06:12 pm

**Notes:**

		Distance	Pick Up	Drop Off
<b>4:30 pm - ORIGIN</b>	<b>WEST MIDDLE SCHOOL</b>			
Start on	WEST MS	0.03		
Left turn at	BAXTER RD	1.12		
Bear Left on	BAXTER RD	1.37		
Left turn at	SPRING MEADOWS DR	0.94		
Left turn at	MAYMONT DR	0.28		
Right turn at	BRIGHTSPUR LN	0.22		
Right turn at	GLENMEADOW DR	0.62		
Right turn at	HENRY AVE	0.54		
Right turn at	GLAN TAI DR	0.19		
Left turn at	LALOR DR	0.22		
Right turn at	ARBLAY PL	0.24		
Left turn at	ROYAL VILLAGE DR	0.13		
Left turn at	HENRY AVE	1.20		
Right turn at	DUTCH MILL DR	1.62		
Left turn at	WEIDMANN RD	1.23		
Right turn at	CLAYTON RD	0.93		
Left turn at	MASONRIDGE RD	0.62		
Right turn at	S MASON RD	0.61		
Left turn at	CLAYTON RD	1.74		
Left turn at	MUNICIPAL CENTER DR	0.48		
Continue on	S OUTER FORTY DR	0.55		
Left turn at	AMERSHAM DR	0.21		
<b>&gt;&gt; TURN AROUND AT &lt;&lt;</b>				
	AMERSHAM DR@DARIEN DR	0.21		
Left turn at	S OUTER FORTY DR	0.29		
Left turn at	TOWN & COUNTRY ES DR	0.04		
<b>&gt;&gt; TURN AROUND AT &lt;&lt;</b>				
	823 TOWN AND COUNTRY EST	0.04		
Right turn at	S OUTER FORTY DR	0.84		
Continue on	MUNICIPAL CENTER DR	0.48		
Left turn at	CLAYTON RD	0.10		
Right turn at	CEDAR VALLEY LN	0.44		
Left turn at	CLAYTON HILLS LN	0.30		
Right turn at	CEDAR VALLEY LN	0.58		
Bear Right on	CLAYTON RD	0.98		
Right turn at	BOPP RD	0.57		
Right turn at	TINDALL DR	0.17		
Continue on	BARNBRIDGE RD	0.15		
Right turn at	CARBERRY PL	0.41		
Left turn at	N BALLAS RD	0.27		
Right turn at	HAWTHORNE EST N	0.27		
Continue on	HAWTHORNE EST S	0.27		
Left turn at	N BALLAS RD	0.85		

**Parkway School District  
 Bus Driver Directions For 328-P M, W, TH (GREEN) WESTMID ACT  
 REVISED 08/15/2011**

		Distance	Pick Up	Drop Off
Left turn at	CLAYTON RD	1.14		
Left turn at	TOPPING RD	1.38		
Right turn at	THORNHILL DR	0.92		
Right turn at	MANOR HILL RD	0.33		
Continue on	WOODMARK RD	0.24		
Left turn at	THORNHILL DR	1.00		
Right turn at	TOPPING RD	0.26		
Right turn at	MANCHESTER RD	1.00		
Right turn at	BARRETT STATION RD	0.32		
Left turn at	LAUREL LAKE CT	0.15		
<b>&gt;&gt; TURN AROUND AT &lt;&lt;</b>				
	LAUREL LAKE CT @ PATRICIAN WAY CT	0.15		
Right turn at	BARRETT STATION RD	0.29		
Continue on	BARRETT STA EXIT WES	0.04		
Bear Right on	MANCHESTER RD	0.28		
Right turn at	S MASON RD	1.27		
Right turn at	PEACOCK FARM RD	0.14		
Bear Left on	FEATHERSTONE DR	0.78		
<b>&gt;&gt; TURN AROUND AT &lt;&lt;</b>				
	MASON KNOLL RD@FEATHERSTONE DR	0.78		
Bear Right on	PEACOCK FARM RD	0.14		
Right turn at	S MASON RD	1.96		
Left turn at	I-64	0.74		
<b>57 pm END</b>	<b>I-64 @ N OUTER FORTY EXIT</b>			
Continue on	I-64	0.46		
Continue on	N OUTER FORTY	0.26		
Continue on	MO-141 NORTH EXIT	0.09		
Continue on	MO-141	1.14		
Continue on	N WOODS MILL RD	0.48		
Left turn at	CENTRAL HS	0.02		
Left turn at	BUS GARAGE DR	0.06		
<b>6:02 pm GARAGE</b>	<b>BUS GARAGE DR (END)</b>			

**Parkway School District  
 Bus Driver Directions For 329-P M, W, TH (RED) WESTMID ACT  
 REVISED 08/15/2011**

Route: 329-P M, W, TH (RED)  
 Bus: 26  
 Driver: SCHEPKER, MARILYNN  
 Anchor: WEST MIDDLE SCHOOL

Start Time: 04:32 pm  
 End Time: 05:21 pm  
 Total Time: 49:39  
 Distance: 18.83 mi.

Total Riders:  
 Max Load: 0  
 Route Days: MWH  
 Schedule Day: Wednesday

Driver Sign-On Time: N/A

Driver Sign-Off Time: 05:31 pm

**Notes:**

MOSAIC B/S PRINCETOWN @ WINROCK

		Distance	Pick Up	Drop Off
<b>4:32 pm</b>	<b>ORIGIN</b>			
	<b>WEST MIDDLE SCHOOL</b>			
	Start on	WEST MS DRIVE	0.09	
	Continue on	WEST MS	0.03	
	Left turn at	BAXTER RD	0.71	
	Left turn at	CLAYTON RD	1.32	
	Left turn at	VILLAGE GREEN PKWY	0.26	
	Left turn at	TRAMORE DR	0.07	
	Right turn at	MOORGATE DR	0.12	
	Right turn at	VILLAGE GREEN PKWY	0.29	
	Left turn at	CLAYTON RD	0.25	
	Right turn at	WOODS MILL RD	0.30	
	Right turn at	MANSIONHILL DR	0.34	
	Left turn at	GREEN LANTERN LN	0.15	
	Left turn at	MILLDALE DR	0.04	
	Continue on	MANORS WAY RD	0.50	
	Right turn at	CIRCLE ENT POLO DOWNS	0.00	
	Sharp Right at	CIRCLE ENT POLO DOWNS	0.00	
	Continue on	MANORS WAY RD	0.50	
	Left turn at	MO-141	0.29	
	Left turn at	DUTCH MILL DR	0.76	
	Right turn at	BERQUIST DR	0.22	
	Continue on	PINRUN DR	0.41	
	Continue on	SUMMER TREE DR	0.05	
	Left turn at	TRIANON LN	0.29	
	Right turn at	CHATELET LN	0.19	
	Right turn at	DAUPHINE LN	0.22	
	Right turn at	WOODS MILL RD	0.09	
	Left turn at	BURGUNDY LN	0.02	
	Left turn at	MO-141	0.41	
	Right turn at	WOODS MILL RD	0.40	
	Right turn at	JOHN MORGAN AVE	0.13	
	Right turn at	CREVE COEUR AVE	0.12	
	Right turn at	CHURCH PARKING LOT	0.08	
	Left turn at	CREVE COEUR AVE	0.15	
	Left turn at	JOHN MORGAN AVE	0.13	
	Left turn at	WOODS MILL RD	0.40	
	Continue on	HIGHLAND BLVD	0.06	
	Left turn at	BRITTANY PARKWAY DR	0.28	
	Right turn at	AUBER DR	0.28	
	Left turn at	IRON WARRIOR LN	0.05	
	Continue on	CRESTBURY DR	0.05	
	Right turn at	BLAIRSHIRE DR	0.08	
	Right turn at	WISSMAN DR	0.18	

**Parkway School District**  
**Bus Driver Directions For 329-P M, W, TH (RED) WESTMID ACT**  
**REVISED 08/15/2011**

		Distance	Pick Up	Drop Off
	Left turn at TWINVIEW TERRACE	0.07		
	Left turn at WYNCREST DR	0.08		
	Left turn at FIELDHURST DR	0.17		
	Right turn at CRESTBURY DR	0.08		
	Continue on FOXVIEW TERRACE	0.18		
	Left turn at WYNCREST DR	0.06		
	Right turn at HAVENHURST RD	0.18		
	Left turn at WEIDMANN RD	0.53		
	Left turn at JUSTERNI DR	0.05		
	Right turn at NYKIEL CT	0.16		
	Left turn at JUSTERNI DR	0.19		
	Left turn at WEIDMANN RD	1.53		
	Left turn at CLAYTON RD	0.71		
	Right turn at S WOODS MILL RD	0.18		
	Continue on S WOODS MILL - SOUTH	0.63		
	Bear Right on CIRCLE ROUNDABOUT	0.02		
	Left turn at CIRCLE ROUNDABOUT	0.01		
	Right turn at S WOODS MILL - NORTH	0.21		
	Left turn at CEDAR SPRINGS DR	0.15		
<b>5:13 pm</b>	<b>END CEDAR SPRINGS DR @ CEDAR FIELD CT</b>			
	Continue on CEDAR SPRINGS DR	0.31		
	Right turn at WALNUT CREEK LN	0.04		
	Left turn at WALNUT CREEK DR	0.03		
	<b>&gt;&gt; TURN AROUND AT &lt;&lt;</b>			
	WALNUT CREEK DR (END)	0.03		
	Right turn at WALNUT CREEK LN	0.04		
	Left turn at CEDAR SPRINGS DR	0.45		
	Left turn at S WOODS MILL - NORTH	0.17		
	Left turn at S OUTER FORTY DR	0.20		
	Continue on S WOODS MILL RD	0.52		
	Bear Right on CONWAY RD	0.17		
	Bear Left on MO-141	0.79		
	Continue on N WOODS MILL RD	0.48		
	Left turn at CENTRAL HS	0.02		
	Left turn at BUS GARAGE DR	0.06		
<b>5:21 pm</b>	<b>GARAGE BUS GARAGE DR (END)</b>			

**Parkway School District  
 Bus Driver Directions For 330-P M, W, TH (BLUE) WESTMID ACT  
 REVISED 08/15/2011**

Route: 330-P M, W, TH (BLUE)  
 Bus: 103  
 Driver: POWER, LINDA  
 Anchor: WEST MIDDLE SCHOOL

Start Time: 04:19 pm  
 End Time: 05:44 pm  
 Total Time: 85:50  
 Distance: 35.06 mi.

Total Riders:  
 Max Load: 0  
 Route Days: MWH  
 Schedule Day: Wednesday

Driver Sign-On Time: 04:09 pm

Driver Sign-Off Time: 05:54 pm

**Notes:**

		Distance	Pick Up	Drop Off
<b>4:19 pm</b>	<b>GARAGE</b>			
	<b>BUS GARAGE DR (END)</b>			
	Start on	0.06		
	Right turn at	0.02		
	Right turn at	0.48		
	Continue on	2.22		
	Continue on	0.24		
	Continue on	0.18		
	Right turn at	1.56		
	Right turn at	0.71		
	Right turn at	0.02		
	Continue on	0.09		
<b>4:30 pm</b>	<b>ORIGIN</b>			
	<b>WEST MIDDLE SCHOOL</b>			
	Start on	0.02		
	Right turn at	0.52		
	Left turn at	0.01		
	Left turn at	0.18		
	Left turn at	0.01		
	Left turn at	0.18		
	Right turn at	0.60		
	Right turn at	0.07		
	Left turn at	0.06		
	Right turn at	0.08		
	Left turn at	0.01		
	<b>&gt;&gt; TURN AROUND AT &lt;&lt;</b>			
	LYNN BAY CT No Intersection	0.01		
	Right turn at	0.08		
	Left turn at	0.06		
	Right turn at	0.07		
	Left turn at	1.23		
	Left turn at	0.18		
	Continue on	0.38		
	Right turn at	0.10		
	Left turn at	0.18		
	Right turn at	0.54		
	Sharp Left at	0.46		
	Left turn at	0.22		
	<b>&gt;&gt; TURN AROUND AT &lt;&lt;</b>			
	CHESTERTON LN No Intersection	0.22		
	Right turn at	1.25		
	Right turn at	0.09		
	Right turn at	1.10		
	Left turn at	0.08		
	Right turn at	1.08		
	Left turn at	0.08		

**Parkway School District**  
**Bus Driver Directions For 330-P M, W, TH (BLUE) WESTMID ACT**  
**REVISED 08/15/2011**

		Distance	Pick Up	Drop Off
Left turn at	CLAYTON RD	0.01		
Right turn at	MEADOWBROOK DR	0.37		
Bear Left on	LAKWOOD LN	0.09		
Right turn at	CLAYMONT DR	0.16		
Left turn at	GREENBRIAR LN	0.27		
Right turn at	CLAYTON RD	0.16		
Right turn at	LONDONDARY DR	0.12		
Continue on	BRIARWYCK DR	0.47		
Right turn at	COUNTRY CLUB DR	0.14		
Right turn at	KENILWORTH LN	0.37		
Left turn at	BABERTON DR	0.08		
Left turn at	CLAYMONT DR	0.43		
Left turn at	COUNTRY CLUB DR	0.32		
Right turn at	KENILWORTH LN	0.13		
Continue on	ALGONQUIN DR	0.27		
Left turn at	CLAYMONT DR	0.33		
Right turn at	BAXTER RD	0.04		
Continue on	HOLLOWAY RD	0.56		
Left turn at	SPRING OAKS DR	0.49		
<b>&gt;&gt; TURN AROUND AT &lt;&lt;</b>				
	SPRING OAKS DR@SPRING LEIGH CT	0.49		
Right turn at	HOLLOWAY RD	0.09		
Right turn at	CLEAR MEADOWS DR	0.53		
Right turn at	BAXTER RD	0.86		
Right turn at	MANCHESTER RD	1.38		
Right turn at	HOLLOWAY RD	1.32		
Right turn at	BAXTER RD	0.18		
Left turn at	HILLTRAIL DR	0.62		
Left turn at	IVYWOOD DR	0.18		
Right turn at	WILDWOOD PKWY	0.18		
Left turn at	TRAILWOOD DR	0.13		
Right turn at	OLD OAKS DR	0.23		
Right turn at	BROOKTREE DR	0.30		
Left turn at	KINGRIDGE DR	0.10		
Left turn at	HENRY AVE	0.54		
Left turn at	CLAYTON RD	0.57		
Right turn at	WEST HS	0.08		
Right turn at	WEST HS DRIVE	0.14		
Continue on	WEST HS	0.09		
Left turn at	CLAYTON RD	0.58		
Left turn at	SCHOETTLER RD	0.67		
Left turn at	BROOK HILL DR	0.70		
Continue on	WHITE LN DR	0.51		
Right turn at	BROOK HILL DR	0.22		
<b>5:35 pm</b>	<b>END</b>			
	<b>SCHOETTLER RD @ FAIRFIELD FARMS</b>			
Right turn at	SCHOETTLER RD	0.67		
Left turn at	CLAYTON RD	0.66		
Right turn at	CLAYTON RD EXIT	0.20		
Continue on	141 NORTH EXIT	0.12		
Continue on	MO-141	2.66		
Continue on	N WOODS MILL RD	0.48		
Left turn at	CENTRAL HS	0.02		

**Parkway School District  
Bus Driver Directions For 330-P M, W, TH (BLUE) WESTMID ACT  
REVISED 08/15/2011**

		<b>Distance</b>	<b>Pick Up</b>	<b>Drop Off</b>
		<hr/>		
	Left turn at			
5:44 pm	GARAGE	BUS GARAGE DR		
		BUS GARAGE DR (END)		
		0.06		