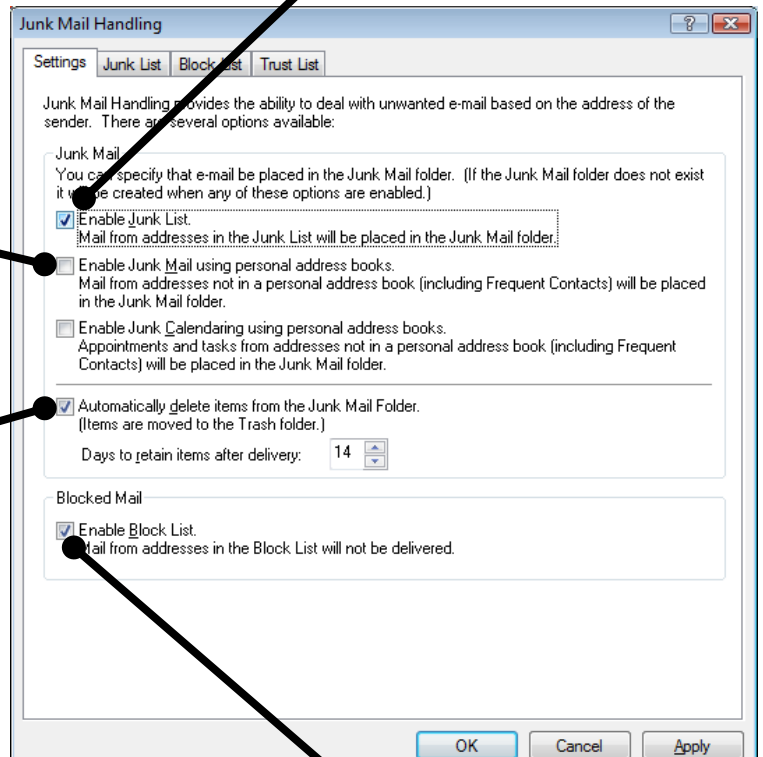


Junk Mail Handling in GroupWise 8.0

Open Tools > Junk Mail Handling

This will block ALL messages from people NOT in your Personal Address Book. If you use this setting you must monitor your Junk Mail folder very carefully.

This option allows messages in the Junk List to be placed in the Junk Mail folder for deletion.



This option allows items in the Junk Mail folder to be automatically moved to the Trash after a specified number of days.

This option blocks ALL mail from any user on the Block List. Messages are NOT placed in the Trash; they are blocked and never delivered to the Mailbox.